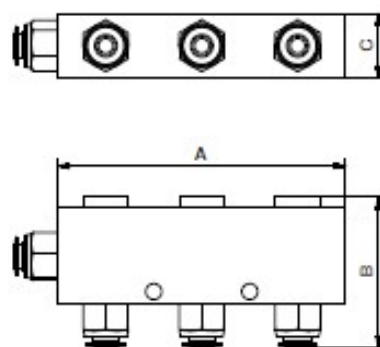
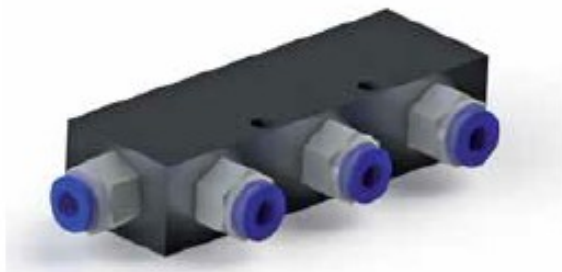


MiniVac Distributor

with 6 connections inc. 1m connection hose to vacuum pump

Nr.	A	B	C	
284753	90	47	20	180



MiniVac Sucker

comprising: tube, sucker, connector

Nr.	A	B	C	
284391	100	10	8	20



The suckers have a standard diameter of 10mm and are made of NBR.
Other materials, dimensions, forms (i.e. oval) on request.



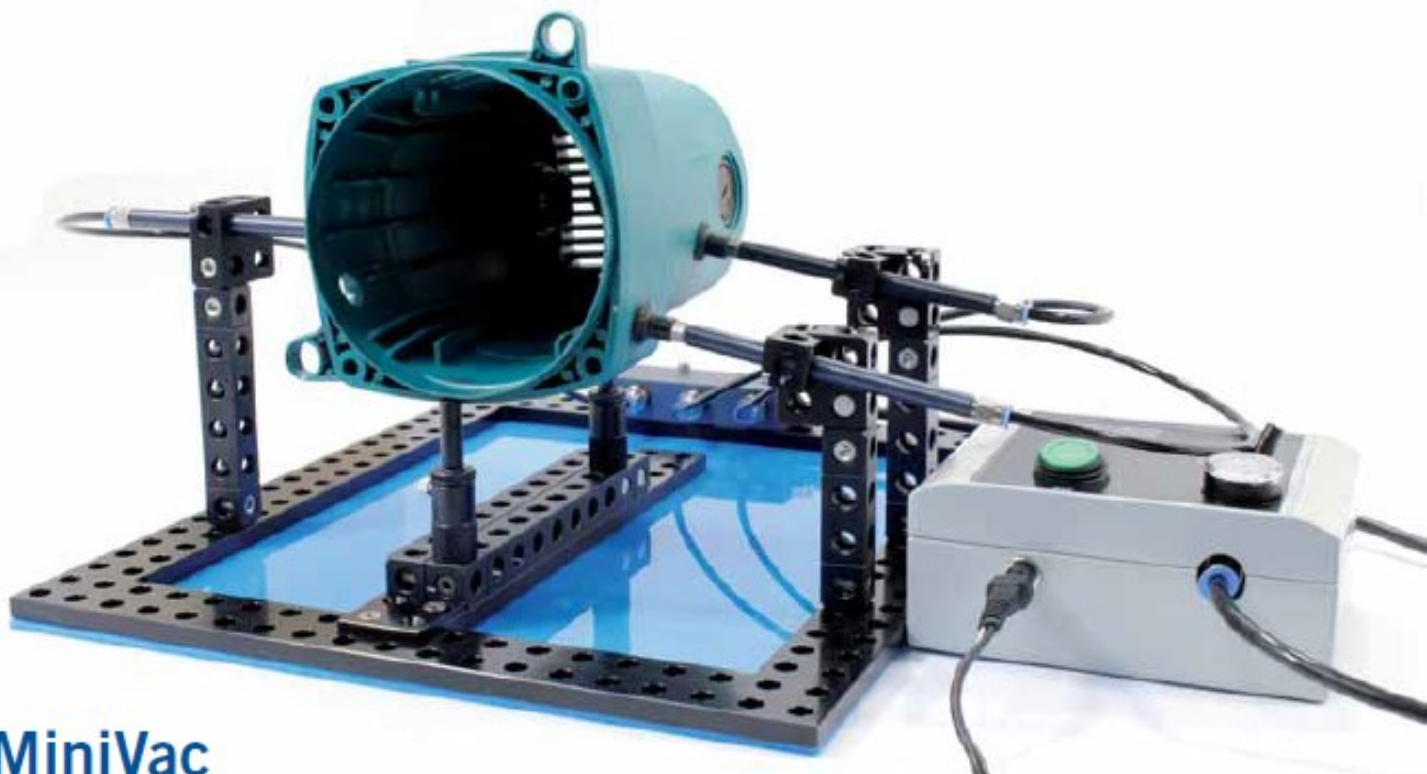
MiniVac – Suction hose

In PU, black

Nr.	D	L	
00958	6x1	1m	17



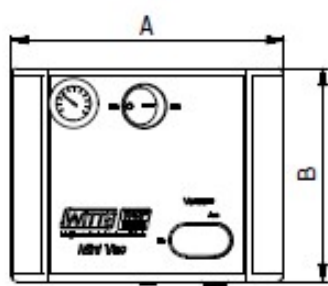
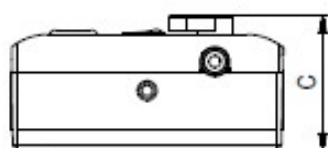
NewXS components can be anodized in different colours. Black (with suffix -1) is standard. Anodized natural is also available. Other colours on request.



MiniVac

Vacuum clamping system

The MiniVac vacuum pump supplies air intake for up to 6 suckers using a minimum of space. An integrated tank with pressure difference switch prevents an abrupt drop in vacuum (and in worst case release of workpiece) and avoids pump running continuously.



MiniVac pump

3500ccm/h

Nr.	A	B	C	g
284752	140	110	70	480



- Operation via 220V power pack, integrated on/off switch with light display, vacuum switch and manometer. Double function membrane pump, max. 90° volume, 3500ccm/h. tank approx. 150ccm.