

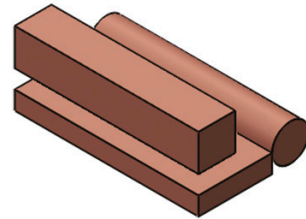


**RAME ELETTROLITICO**  
**ELECTROLYTIC COPPER**  
**ELEKTROLYTISCHES KUPFER**

**Specifiche:** Tutte le misure sono pronte a magazzino  
 Su richiesta possiamo fornire misure diverse  
 \*Queste misure sono fucinati grezzi

**Specification:** All sizes are available from stock  
 Different dimensions can be supplied on request  
 \*The dimensions listed are forged blanks

**Spezifikationen:** Alle Abmessungen sind ab Lager lieferbar  
 Auf Anfrage können wir andere Abmessungen liefern  
 \*Diese Abmessungen beziehen sich auf Rohschmiedeteile



TONDO - ROUND - RUND (Ø)	PIATTO - FLAT - FLACH		QUADRO - SQUARE - QUADRATISCH	
5	20x3	120x10	100x30	10x10
6	25x3	150x10	150x30	12x12
8	30x3	200x10	200x30	15x15
10	40x3	40x12	60x40	20x20
12	50x4	50x12	80x40	25x25
14	20x5	80x12	100x40	30x30
15	30x5	120x12	150x40	40x40
16	40x5	30x15	200x40	50x50
18	50x5	40x15	80x50	60x60
20	60x5	50x15	100x50	80x80
22	80x5	60x15	200x50	100x100
24	100x5	80x15	100x60	120x120
25	25x6	120x15	150x60	*135x135
28	40x6	30x20	200x60	*160x160
30	50x6	40x20	*250x60	
32	60x6	50x20	*200x100	
35	80x6	60x20	*250x100	
40	30x8	80x20		
45	40x8	100x20		
50	60x8	120x20		
60	80x8	150x20		
70	100x8	200x20		
80	25x10	50x25		
90	30x10	80x15		
100	40x10	100x25		
120	50x10	150x25		
150	60x10	50x30		
180	80x10	60x30		
200	100x10	80x30		

**Esempio di ordinativo:** Dimensione    **Order example:** Dimension    **Bestellbeispiel:** Abmessungen