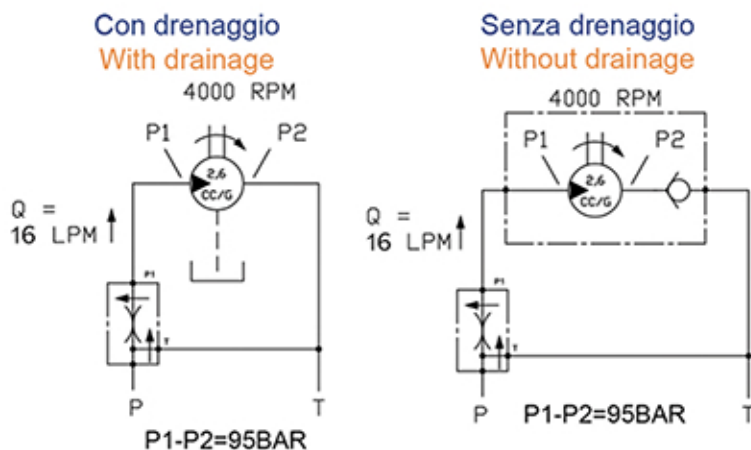


SPECIFICHE TECNICHE - GREEN BLOW IDRAULICO

GREEN BLOW HYDRAULIC - TECHNICAL FEATURES








Cilindrata del motore Motor displacement 	Portata idraulica richiesta Required hydraulic flow rate 	ΔP (P1-P2) al motore ΔP (P1-P2) to motor 
2,6cc/R	16 l/min	95 bar
Pressione sonora Sound pressure 		Peso (solo ventilatore) Weight (blower only) 
83,0 dBa		4,3 kg

GRAFICO PRESSIONE/PORTATA GREEN BLOW IDRAULICO (4000RPM)

PRESSURE/FLOW RATE GRAPH GREEN BLOW HYDRAULIC (4000RPM)

